



MEXICO HOUSING AUTHORITY

828 Garfield Avenue, Mexico, MO 65265

Ph: 573-581-2294

Fax: 573-581-6636

September 2023
Newsletter



DATES TO REMEMBER

September 1—Office closed for Administrative Work Day

September 4—Office closed in observance of Labor Day

September 10—Grandparents Day

September 11—Day of Service & Remembrance

September 21—Resident Association Meeting, 3 pm

September 23—First Day of Autumn

October 6—Office closed for Administrative Work Day

Friday, October 7th—Tyronn Lue Day of Service

October 9—Office closed in observance of Columbus Day

October 19—Resident Association Meeting, 3:00pm

October 31—Halloween

REMINDERS

- Please be careful with chairs, bikes, etc. on the front porch walls. These items scrape the wall and you will be charged for touch up painting.
- Don't forget! Your dogs need to be secured when you are away from your home when maintenance or management are scheduled to be in your unit. Also, your dog **CANNOT** be tied out in the yard without someone supervising the dog or outside without a leash.
- Make sure that your name and address are **legibly** written on your money order when making payments.
- Check all used or rented furniture you receive for bed bugs. MHA staff will be happy to inspect furniture that you bring in to the unit. If you suspect you have bed bugs, immediately wash and dry your clothing, bedding etc. on hot settings or store them in a sealed plastic bag and contact MHA ASAP so we can schedule a treatment for your unit.



**Thank you Don Rumman
aka "Puppy" for being
there to help MHA staff
and neighbors when
needed!**

Financial Opportunity Centers®
RURAL LISC

Building a Strong Foundation for Families

The Financial Opportunity Centers® model pairs individuals with coaching services to create a plan toward financial freedom. Coaches support individuals with tools and resources that allow them to navigate the complexities around increasing income, decreasing expenses, and acquiring assets.

The FOC model includes:

- One-on-one long-term coaching toward employment and financial goals, designed to improve economic stability and family well-being.
- Core components of the program provide an integrated service model including all 3 services outlined below.

Employment Services

- Career coaching
- Job readiness & job placement
- Job retention & job advancement
- Education & training

Financial Coaching

- Establish budget & balance sheet
- Visiting & goal setting
- Credit report & FICO score review
- Access to financial products

Income Supports

- Connection to public and private benefits (SNAP, childcare subsidies, housing and energy assistance, EITC)

FOCs equip clients with the tools, motivation, and knowhow to make sound financial decisions that:

- Increase Earnings
- Build Credit
- Reduce Expenses
- Boost Assets

The FOC model is not a distinct program or organizational entity, but rather, a new way for agencies to conceptualize and approach their work. As such, the model is deployed within the existing infrastructure of established and trusted community-based organizations. The model is based on the Center for Working Families approach, originally developed and promoted by the Annie E. Casey Foundation in partnership with Rural LISC.

Community Services Block Grant (CSBG) funding accounts for 35% of the overall funding for the Financial Opportunity Center (FOC) model. Other funding sources provide the additional 65% of the total program funding.

For More Information Contact

Christy Cook
Call/ Text: 573.283.3661
Email: christy@cmca.us
Audrin, Boone, & Calloway

Getting Ahead In a Getting-By World

A 12-WEEK CLASS FOCUSED ON BUILDING RESOURCES FOR A BETTER LIFE

"I was able to learn how to grow my network connections, get ahead of my finances, buy a house, and start a business."
-Rosita

"It helped me open my mouth because you're not going through things alone. We became a big family."
-Monica

"Now my mediating, negotiating, and arbitrating is better because I have people I know that can help me."
-John

Participants are called **INVESTIGATORS** as they will explore how our community works through a different lens. Investigators will cover the following topics:

- My Life Now
- Theory of Change
- The Rich/Poor Gap
- Hidden Rules of Economic Class
- The Importance of Language
- Eleven Resources
- Self-Assessment of Resources
- Community Assessment
- Building Resources
- Personal and Community Plans

To remove obstacles to participating, the following is offered as part of the class:

Dinner
Childcare on-site
Transportation
Participants receive \$20 each session (\$240 total)

Classes start the 1st Tuesday of September and end mid-November. This rotation is **September 5, 2023 - November 21, 2023**. Any class missed must be made up. Missing more than two classes is not allowed.

Classes are held each Tuesday from 5:30pm-8:30pm at St. John's Lutheran Church, 1000 Dorcas Street, Mexico, MO

Investigators have the option to have a free health assessment at no charge through the Health Department.

APPLICATIONS ARE AVAILABLE AT THE CHAMBER AND COOPERATING AGENCIES. QUESTIONS? EMAIL DANA KELLER AT DKELLER@MEXICO-CHAMBER.ORG OR CALL 573-581-2765

Tenant Spotlight

Alexis and Johnathan always cooperate with MHA staff and follow Resident obligations!

Thanks Alexis & Johnathan Carpenter!!

Nominate Your Neighbor!!

Stop by the office to nominate someone you would like to see featured in our next Tenant Spotlight!

Guardian Pest Control

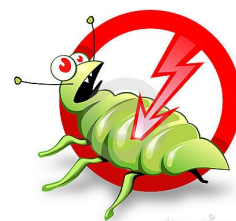
and management will be in your unit once each month to spray for pests. Please make sure screen doors are unlocked and pets are secured.

September 22:

MacFarlane, Fieldcrest, Missouri, Wade, Liberty, Breckenridge, Singleton, Buchanan, Hassen, Boulevard, Holt, and Lafayette

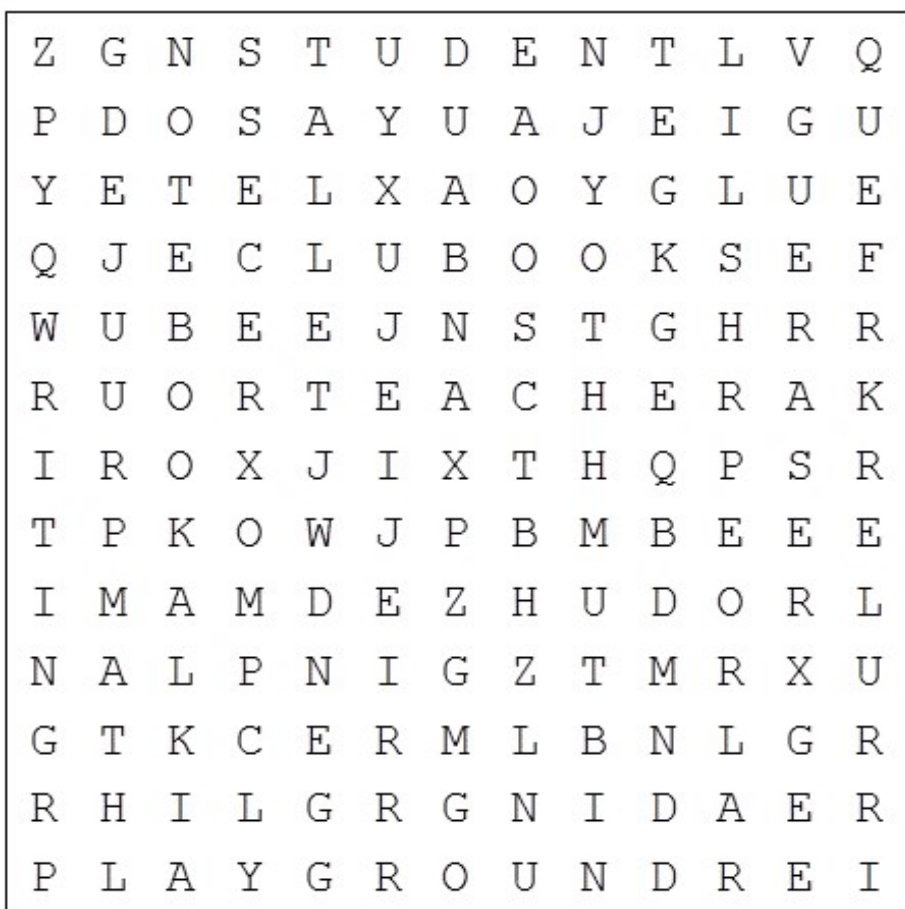
October 13:

Trinity, Garfield, Seminary, Central, Tyronn Lue, Union, Calhoun, Bolivar





Back to School



BOOKS

DESK

ERASER

GLUE

LUNCHBOX

MATH

NOTEBOOK

PAPER

PENCIL

PLAYGROUND

READING

RECESS

RULER

STUDENT

TEACHER

WRITING



Name: _____ Date: _____ Class: _____



Autumn Word Search Puzzle



S Q U I R R E L S G A T H E R N U T S A
R E K R A D W O R G S T H G I N N H B U
S E L P P A G N I K C I P F A H E T A T
N M U T U A G L V Z Z V E B L A E U C U
N C Q E D A S N L R U M C M E R W O K M
F O N Z Z V C I B A N M D G M V O S T N
A I P O C U N R O C F C W Q V E L Y O A
W I N T E R A P P R O A C H E S L L S L
P U M P K I N S V P O W S I S T A F C F
T H A N K S G I V I N G R N I U H S H O
S B A Y Q K B Y M L L I A W C U O D O L
A T W O K S B A D I W T W N G A X R O I
L E A V E S C H A N G E C O L O R I L A
I N L H E Z F T Z L I D U M K U J B D G
S S E N L U F T I U R F W O L L E M K E

autumn
autumnal foliage
back to school
birds fly south
cornucopia
fall
Halloween
harvest

leaves change color
mellow fruitfulness
nights grow darker
picking apples
pumpkins
squirrels gather nuts
Thanksgiving
winter approaches

